

Score^s

experts in seating

work chairs
for **dental**
environments



dental



medical



industry



office





experts in seating[®]

Doing your job with ease. If you can do that then you're a true professional. This also applies to all our expertise. You don't notice it – and that's exactly what makes the difference. Because after a day of sitting at work on one of our seating solutions, you still feel great. No lower back pain. No sore shoulders. No restless feeling in your legs. Because we're professionals who invisibly take care of other professionals. And we're very proud of that. With us you'll be sitting pretty.

Take a seat.





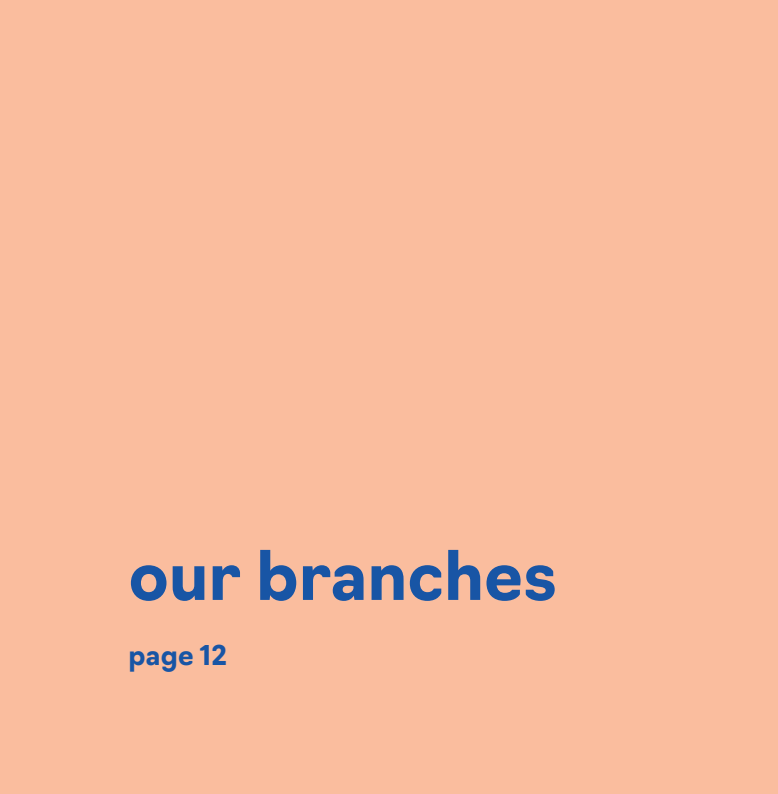
score makes a difference

page 6



a chair for every workplace

page 10



our branches

page 12



our work chairs

page 20



just sit healthy

page 62



support at the right points

page 64



sit down for a moment

page 66



Sitting ergonomically so you can work comfortably and feel fit and flexible. That's our goal. To achieve this, we develop and manufacture ergonomic work chairs that really make a difference. Exercise is important, but we believe sitting has to be healthy as well.

'We' are the approximately sixty problem solvers who are Score. We develop and manufacture our seating solutions in our own factory in Tolbert, in the province of Groningen in the Netherlands. We apply the most recent ergonomic standards, the latest techniques and best materials while taking all the challenges faced by people in sedentary professions into account. People stand at centre stage with us. Or better said, sit!

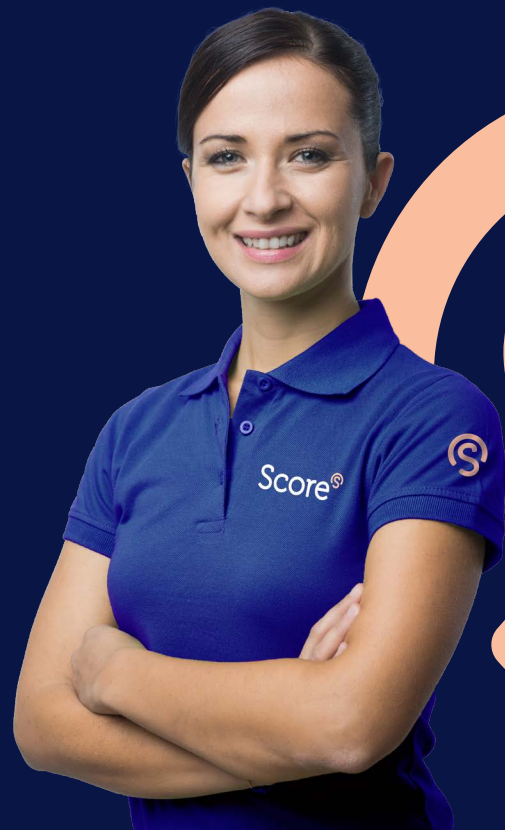


our own path

At Score, we like to do things our own way. Maybe our designs aren't trendsetting, innovative or super modern, but they are solid, robust and a little quirky. Solid chairs that you can literally use for decades. We don't follow the crowd but pave our own way! We listen to our customers' experiences and base our plans on what they tell us. When we see opportunities for improvement, we investigate together to see how they can be implemented. This has made us a reliable player in the market over the years.

our mentality

We value our relationships very much. Connecting people with short communication lines, honest and transparent; that's what we stand for. We want the best for everyone, both internally – for our colleagues – and externally – for dealers and anyone who takes a seat on our products. If you are able to enjoy doing the things that are important to you, and we can contribute to that in our own way, then we're satisfied.



we take the burden off you

You deserve the perfect seating solution. One you never have to worry about. This may sound a bit vague, but what matters is that our craftsmanship takes the burden off of you. There's always room for improvement. Whether it's our processes, products or your sitting posture. Because we may have great ideas, but it's your experience that counts. We improve ourselves by listening – to the market, to the developers of new technologies and to you as a user. *Learning by listening.* That's Score.



our promise

We are problem solvers. Every component in our products has a function and everything is there for a reason. Because quality is all about the details. That's why we call ourselves *experts in seating*. We know the ins and outs of the various industries we develop our products for. Even yours. So we work every day to ensure that you experience this too. That, while you're sitting, you really feel that we're thinking along with you... and ahead. We find solutions to problems you didn't foresee yourself. With an eye for detail, with passion and inspiration. Sitting comfortably so you can concentrate on doing your job. That's our promise to you.

a chair for every workplace

There's simply no such thing as one universal (work) chair, perfect for every user and work environment. Different requirements apply to a chair in a workshop than to an office chair.

At Score, we made a distinction between four major branches – Dental, Medical, Industry and Office – each with their own specific work stations and associated activities. So we developed a range of seating solutions that take into account both workplace-related requirements and the wishes of the user. After all, sitting comfortably and ergonomically while working are paramount at Score.

*“My focus should not wane.
A chair by Score keeps me sharp.”*





dental

Dentistry is a sector all its own. Intensive treatments where you, as a dental care professional, regularly have to twist and turn in difficult positions in order to do your job properly. A chair or saddle chair that supports you well is absolutely essential. But not every seating solution is up to this challenge! 70% of dental care professionals regularly have back problems; and you certainly don't want that. That's why we developed ergonomic chairs and saddle chairs that you can sit on comfortably and ergonomically. Even for longer periods at a time and if you have to twist and turn in difficult positions. They provide your body with the right support so you can easily change position or move around the workspace. For example, to grab another instrument or take a quick look at an X-ray. This is how we ensure you are relaxed and full of energy at work so you can focus on your patient.



medical

The seating solutions must also meet specific requirements in medical work environments. Because a waiting room chair is not a phlebotomy chair and a chair in the operating room is very different from a chair behind the reception desk. That's why we developed a range of seating solutions for hospitals and other medical environments. Our upholstery is, among others, urine, blood and mould resistant. For example, PUxx can be cleaned with 70% alcohol, so this upholstery meets the highest hygiene requirements. Score takes the staff's healthy working posture and comfort into account. Whether you're a nurse, doctor or laboratory technician, a chair that offers you the right support is super important. So you have enough energy left after a day's work to enjoy life.



industry

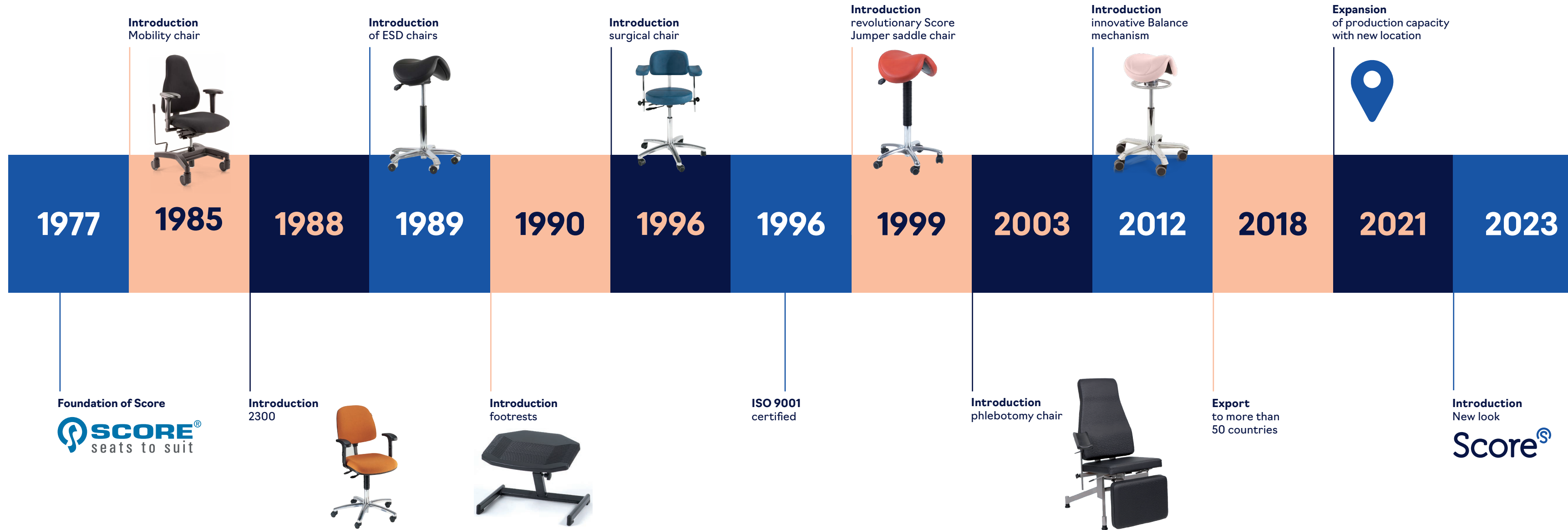
Only the best is good enough for you. That's why we developed Polyurethane seating solutions that are perfect for demanding work in industrial workplaces, including ESD and cleanroom laboratories. They are resistant to chemicals and are easy to keep clean. Chairs that can take a beating, made of an aluminium base combined with a seat and back made of PU (Polyurethane) or beech. Materials that you can use for years, even under extreme conditions. For workplaces in electronics, we have ESD chairs that safely discharge built-up voltage to the floor. Especially for cleanrooms, we have chairs with a HEPA-filter to collect all undesirable dust particles. Robust chairs that you will still sit comfortably on after hours of work.



office

More and more companies are investing in the health and vitality of their employees. This is especially important in the office, because office workers – working hours and private time combined – sit an average of more than ten hours! And that's not good for our bodies. We're happy to offer you the possibility of working alternately between standing and sitting. On a saddle chair, for example! Because it actually combines the best of both worlds: on the one hand, the healthy posture of standing and, on the other hand, the stability and comfort of traditional sitting. Whether you sit on a saddle chair or a regular chair, when you sit properly and your body gets the support it needs, you can relax longer and no undesired tension builds up in your muscles causing neck and shoulder complaints. They provide the right support which in turn promotes energy and concentration levels. We've got your back!

expert in seating since 1977



Of course, our work does not stop at developing, producing and exporting chairs. We also give advice, think along and answer every question you have. That's service.

service and warranty

Score chairs are made with craftsmanship from high-quality durable materials in our own factory in Tolbert and are exported to more than 50 countries. Our chairs have a standard 5-year warranty. Ask about the exact conditions.

extensive score dealer network

Score supplies nationally and internationally through selected dealers only. There's always a Score dealer nearby. Well-trained workplace advisors at Score can advise on the best seating solution for your specific workplace in consultation with the Score dealer.

fast delivery program

Through our special fast delivery service, we ship a selection of high-demand chairs within 3 business days. Ask about the exact conditions.

trial period

See an interesting seating solution? Ask your dealer about the possibilities to try out a product.

showroom

You're also welcome to visit our showroom, which makes it very easy to compare a number of different seating solutions. If you make an appointment in advance, our experts will be happy to discuss all the advantages and features of the products you're interested in.



own product development and production

Bending steel, welding seams, drilling holes: a good product is perfect down to the smallest detail. That's why everything is done with equal care at Score: from assembly to packaging. In our own factory in Tolbert, our technical professionals work on our products with great precision. Products we developed ourselves! And our factory and office are located right next to each other. This means the communication lines between our product developers and production employees are short, allowing us to respond quickly to dealers and customers. We all work with heart and soul on new seating solutions that meet the current ergonomic standards and we keep everything in-house. We enjoy working together and being inspired, but we're also specialists and convinced of our expert craftsmanship. We pave our own way. That's Score!



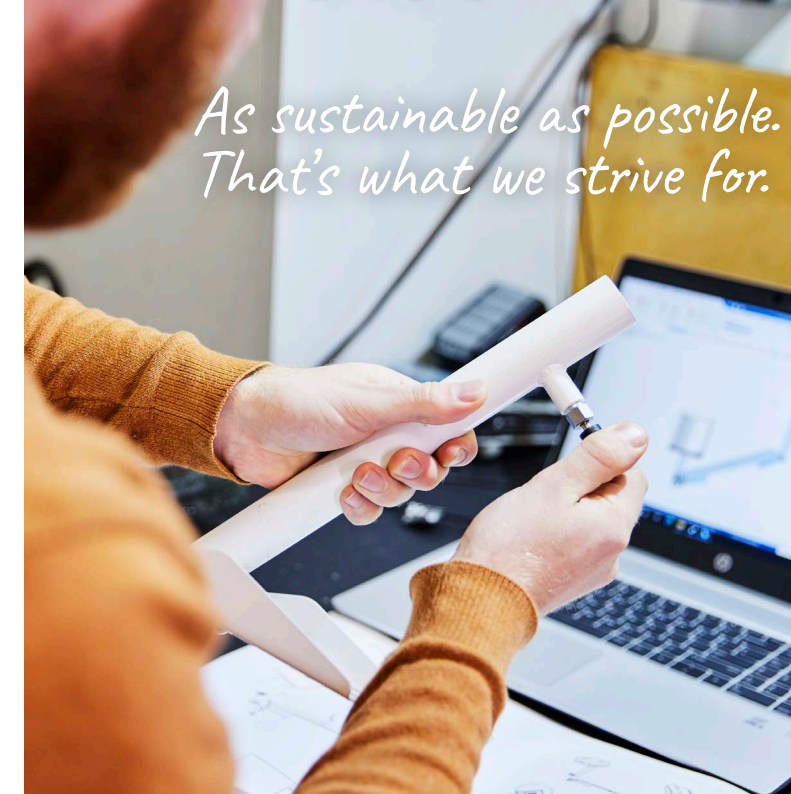
NEN-EN-ISO 9001 certification and quality management system

The success of a company is all about keeping your promises. Our promise is to manufacture high-quality seating solutions with respect for our environment. That's what Score stands for.

We guarantee the quality of our products with, among other things, our ISO certification. The quality management system helps us keep our organisation healthy. This allows us to continuously improve both the process quality and the quality of our products and services.

Thanks to this system, it's clear to everyone what we do, how we do it and that we comply with the applicable laws and regulations. It also helps us to further develop our organisational policy, to motivate and train our employees, to increase our quality awareness, to maintain lasting relationships with dealers and to increase general customer satisfaction.

*As sustainable as possible.
That's what we strive for.*



durability and sustainability equal quality

When you choose Score, you choose durability. Our products are super strong, solid and safe so you can use them for decades to come. Made from materials that can take a beating and are produced sustainably as much as possible. For example, our energy comes from the solar panels on our roof, our building is well insulated and we replaced all fluorescent bulbs with LED. We carefully select our metals, fabrics and plastics one by one and work closely with our suppliers. As sustainably as possible. That's what we strive for.



Check
scoreseating.com
for our entire
product range!



the dynamic shape of sitting

Experience the comfort of a saddle chair! On the ergonomically shaped saddle seat, you automatically assume a healthy sitting position when your feet are firmly on the floor. Your back relaxes in a natural way, which not only improves your breathing but is also good for your circulation and digestion. And you're also very mobile on a saddle chair. The Score Jumper and Score Amazone are our saddle chair super stars.

Choose from our various mechanisms, including our unique Balance mechanism that moves subtly along with you. We also have the cheerful Score Jolly and the compact Score Polo. They're available in a variety of designs and with various accessories and mechanisms. Score has thought of everything!

- Ⓢ Promotes a healthy back and sitting posture
- Ⓢ For good breathing, circulation and digestion
- Ⓢ Available in various versions and with our unique Balance mechanism



score amazone



- Narrower seat to reach a larger hip angle
- Choice of 3 types of mechanism including the unique Balance mechanism
- Also available in a seamless version

score jumper



- Wider seat for broader support
- Also available in a seamless version
- Choice of 3 types of mechanism, additional lumbar support and armrests

score polo



- Height-adjustable
- Light in weight and easy to clean
- With a flexible base

score jolly



- Soft bicycle-type seat
- 2 mechanism options, Fixed or Balance
- Convenient, comfortable, practical and compact

the score apical: ready. sit. go!

The Score Apical isn't the only work chair we have for dental clinics. But it is the first chair we developed together with ergonomists according to the official standard for dental work chairs. The result is a work chair that helps you automatically adopt an ergonomic sitting position, which reduces neck, shoulder and back pains. You can assemble the Score Apical easily yourself without any tools. Adjust the settings and you're ready to go. Ready, sit, go! The Score Apical is available in various colours of durable, comfortable Stamskin upholstery and the compact base is mounted on strong, smooth castors. The Score Apical is suitable for users up to 110 kg.

- Ⓢ Developed according to the standard for dental work chairs
- Ⓢ Equipped with a pelvic support for an active sitting position
- Ⓢ Thanks to the ergonomic design, which reduces neck, shoulder and back pains

score apical



- Easy to assemble
- Hygienic Stamskin upholstery
- Brake unloaded castors



a range of stools for dental work environments

A dental work environment requires special seating solutions. They not only need to be compact and manoeuvrable; they also have to be durable and able to be kept perfectly clean. That's why we developed our Score Medical Line. Both in terms of comfort and materials, these stools are ideal for dentists, dental assistants, dental hygienists.

Easy to grab when you need more seats, very comfy and made of strong, wear-resistant and hygienic material. A number of Score Medical stools are equipped with special armrests and backrests, we have versions with an ergo shape seat and you can even opt for a stool with our unique Balance mechanism. An ergo shape seat prevents pinching on the underside of your thighs, so you maintain good blood flow to your legs.

- 🌀 Compact, manoeuvrable, durable stools
- 🌀 Easy-to clean material
- 🌀 Available in multiple versions

score medical 6100 / score medical 6300



- Also available in combination with a smaller ø 35 cm seat
- Available with a ring shaped gaslift lever, easy to reach
- Lower model compared to Score Medical 6101/6301

score medical 6101 / score medical 6301



- Also available in combination with a smaller ø 40 cm seat
- Comfortable and durable
- Also available in an ESD version

score medical 6211 / score medical 6311



- Comes with backrest
- Also available in ESD version
- Two mechanism options, Fixed or Tilting seat

score medical 6221 /
score medical 6321



- Comes with a crescent backrest
- Two mechanism options, Fixed or Tilting seat
- Also available in an ESD version

score medical 6260 /
score medical 6360



- With multi-adjustable 360° support
- Perfect for hospitals, veterinary practices and dental practices
- Can be mounted left or right sided

score ergo support



- With height adjustable lateral rotating armrests
- Perfect for Microscope users in surgery
- Standard with tilting ergo shape seat



What a reception!

Score at Work is the most widely applicable and individually adjustable office chair of the Score family. Fully modular, so the individual components are interchangeable. And they're sustainably developed with a high recycling value.

You can combine the Score at Work any way you like with upholstery in many different materials and colours and it's equipped with three unique mechanisms to support the body perfectly in all respects. Armrests, a sliding seat, a special ergonomically shaped backrest and an inflatable lumbar support for the lower back: everything is possible with the Score at Work.

- ⌚ Very versatile in any workplace
- ⌚ Combine exactly how you want
- ⌚ Extra sustainable thanks to the high recycling value



Choose your product
and configure it
with our handy
product configurator!



score at work



- Fully modular
- Three different mechanisms
- Also available as a Large version

score at work 01



- Recyclable
- Taller version and with footring
- Easy to assemble

score at work 02



- Fully modular
- The largest version of the four Score at Work chairs and with footring
- Several upholsteries and colours available

score at work 08



- Height-adjustable footboard
- With trumpet glides
- Perfect for high workplaces

indestructible work chairs

A no-nonsense working chair, suitable for a large part of the working population. Ergonomically shaped, super durable and equipped with all the functions you need: that's the Score Ergo 2300 Line. We've been supplying this indestructible NEN-EN 1335-1 for decades and we're really proud of that.

The Score Ergo chairs were developed to suit many different people with various professions in all kinds of environments. The various models are equipped with a footring or a foot plank, which makes this chair ideal for high workplaces up to 115 centimetres! So everyone's friend without having to compromise on quality and craftsmanship.

- Ⓢ All-round work chair
- Ⓢ Adjustable for optimal sitting comfort
- Ⓢ Suitable for a variety of work environments



score ergo 2300



- Various hardwearing materials available
- No-nonsense office chair
- Armrests optional

score ergo 2301



- Higher than the Score Ergo 2300 and with footring
- Adjustable backrest
- Robust, functional design

score ergo 2302



- The tallest of the Score Ergo chairs and with footring
- Different upholsteries and colours
- For every working setting

score ergo 2308



- With adjustable footboard
- Trumpet glides
- Ergonomic and multi-adjustable

*“Thanks to my Score chair,
I have enough energy left at
the end of my working day to
bake cakes with my daughter.”*



one comfortable office chair in three sizes

Looking for a solid, ergonomically shaped office chair that's very comfortable? A chair that's suitable for almost everyone and that you can adjust quickly? Then you need the Score 5100, identical in design but available in three different sizes: Small, Medium and Large. The Score 5100 Line is also equipped with a synchro mechanism, which means you can perfectly coordinate the backrest and seat settings so you not only sit comfortably, but more importantly, even reduce physical complaints in your neck, shoulders and back.

- Ⓢ Ergonomic shape and comfortable
- Ⓢ With synchro mechanism
- Ⓢ Available in the sizes Small, Medium and Large

score 5100 small



- Ergonomic office chair for everyone
- The smallest model from the 5100 line
- With synchro mechanism

score 5100 medium



- Hardwearing, Flex upholstery
- With gaslift height adjustment
- Easy to adjust

score 5100 large



- The largest model in this line
- A solid, comfortable and ergonomic office chair
- Promotes active sitting

sitting comfortably in demanding workplaces

The work chairs from our Score Pro 4400 Line are robust and durable but at the same time comfortable. Ideal for dental work environments as well as laboratories, because they're very suitable for this demanding work.

The PU (Polyurethane) seat and back feel wonderfully soft, while the material is resistant to various chemicals and very easy to clean. That will sit well with you. The chairs from this line are available with a footring or footboard, so they're suitable for high workplaces. There's also the option of ordering the chair with armrests and / or a sliding system, which increases the seat depth by a maximum of 7 centimetres.

- Ⓢ Durable, strong and comfortable
- Ⓢ Very easy to clean
- Ⓢ Available in an ESD version



For advice, please contact one of our advisors.

score pro 4400



- For work surfaces from 70 - 85 cm
- Soft PU seat and back
- Also available in an ESD version

score pro 4401



- For work surfaces from 80 - 100 cm
- Soft PU seat and back
- Also available in an ESD version

score pro 4402



- For work surfaces from 90 - 115 cm
- With footring
- Suitable for high workstations

score pro 4408



- Height adjustment from 59 - 84 cm
- Trumpet feet
- Soft PU seat and back

sturdy, durable and compact

A versatile, beautifully designed work chair suitable for various workplaces? Our Score Spirits are eye-catching, durable and solid all-round work chairs with an affordable price. You'll see them, for example, in laboratories, schools, hospitals and call centres.

The distinctive backrest gives your shoulders extra freedom of movement. Score Spirit Line chairs are made of PU (Polyurethane) and beech, which is strong and yet very soft to the touch. And that's not all: this material is also super easy to keep clean and it's very durable. Perfect, right? That's the spirit!

- ☞ Durable, sturdy work chair
- ☞ Extra freedom for your shoulders
- ☞ Easy to clean



score spirit 1500



- Strong, light and compact
- For work surfaces from 70 - 85 cm
- Also available in an ESD version

score spirit 1501



- For work surfaces from 80 - 100 cm
- Strong, light and compact
- Equipped with a height adjustable footring

score spirit 1502



- For work surfaces from 90 - 115 cm
- Strong, light and compact
- Suitable for high workstations

score spirit amazone



- Three variants: three working heights
- Also available with lumbar support
- Resistant to many chemical substances

stools for every situation

Who has never sat on one? Our Score Base Line stools set the standard for stools. Simple but super functional. A durable stool with a seat made of beech, PU (Polyurethane) or Stamskin and with an extra strong frame. You'll mainly find these compact, practical stools in schools and training centres. Robust, stackable, and available in three frame colours. The Steps model even has footbars at four different heights. Handy!

- 🕒 The standard among stools
- 🕒 Robust, stackable and floor friendly
- 🕒 Available in three frame colours

score base 240



- Stackable up to 5 stools
- Available in seat heights 50, 55, 60 and 65 cm with a foot bar
- Floor friendly

score base steps



- Stackable up to 5 stools
- Same seat heights as Base 240, but with foot bars at 30, 34, 38 and 42 cm from the top
- Floor friendly

Would you like to be informed about our **latest news**? Sign up for our newsletter.



*“Recovering from my work?
Thanks to my ergonomic chair from Score,
I actually have energy to spare!”*



stools for dynamic sitting

You can do just about anything with the Score Opti Line stools. You can move to the left and right, up and down, and even opt for a footring for high workplaces. A durable stool with a seat made of beech, PU (Polyurethane) or Stamskin, depending on the work environment. There's even an ESD safe version, for example. They're real all-rounders you can use as a side stool or work stool.

- Ⓢ Dynamic stools with an array of options
- Ⓢ Suitable as a work stool or side stool
- Ⓢ Provided with a round seat Ø 35 cm



- All-round stool
- For work surfaces from 70 - 85 cm
- Ring-shaped gaslift lever and small base

score opti 2200



- Higher than the ordinary Score Opti 2200
- For work surfaces from 80 - 100 cm
- Ring-shaped gaslift lever and small base

score opti 2210



- The tallest of the three Score Opti variants
- For work surfaces from 90 - 115 cm
- Ring-shaped gaslift lever and small base

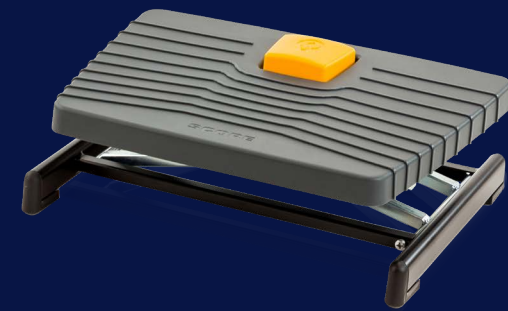
score opti 2212

support for your feet, rest for your legs

Do you have a high workplace and are you unable to reach the floor with your feet while sitting? Then you need a footrest. An essential item if your feet are dangling above the floor when you're sitting with your upper and lower legs in a right angle. This optimises your circulation and prevents restless legs.

We sold hundreds of thousands of the successful Score Basic 952 worldwide and now we have its improved successor: the Score Pro 952. It's practical and durable, you can easily adjust the height and inclination with your foot.

- Ⓢ The solution for dangling legs
- Ⓢ For optimal circulation
- Ⓢ Easily adjustable with one foot



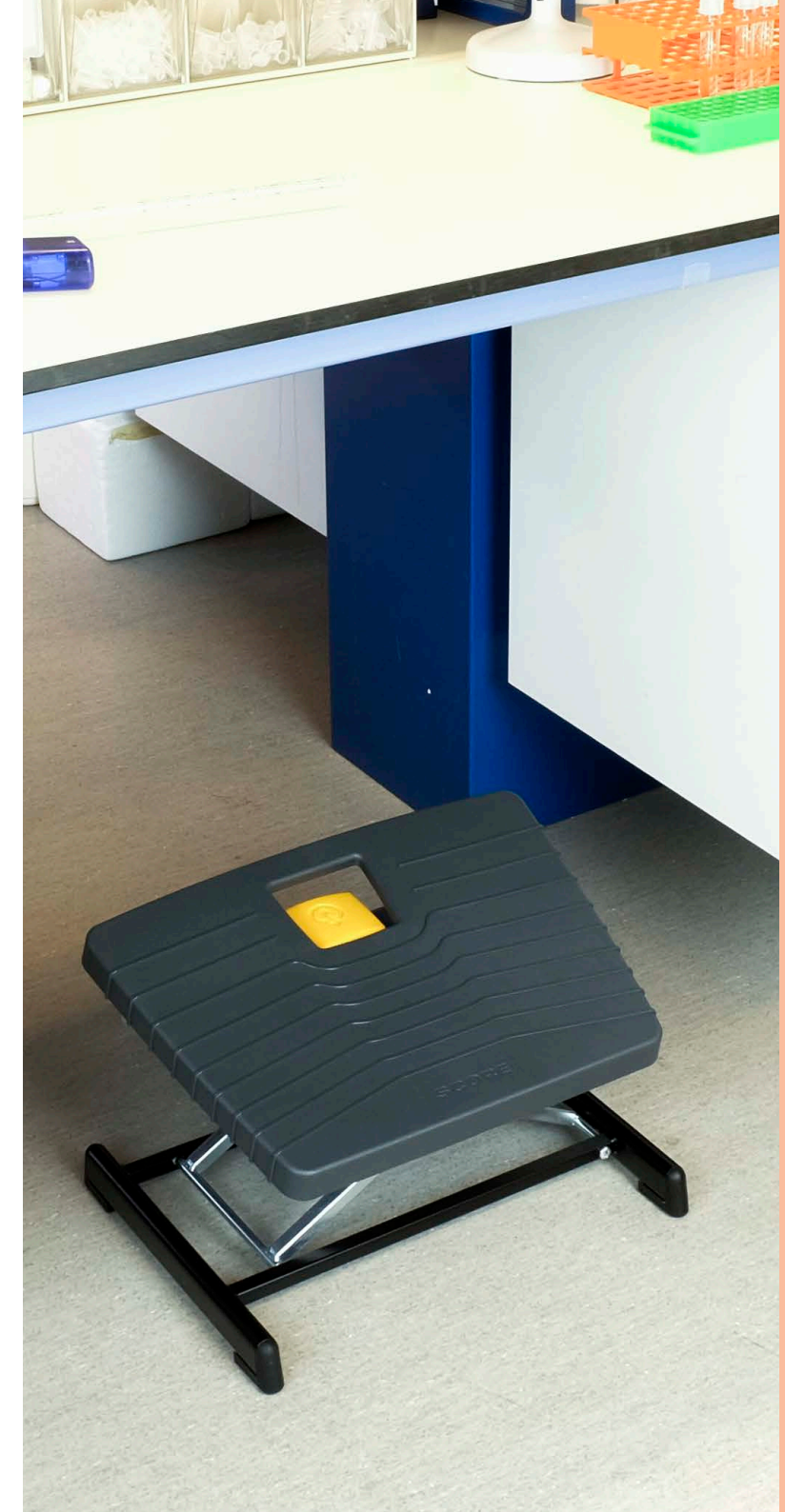
- High-quality footrest
- Easy to operate by foot
- Non-slip footboard 44 x 32 cm (W x D)

score pro 952



- Higher and larger than the Score Pro 952
- Footboard measure according to DIN 4556
- Large non-slip footboard 49 x 40 cm (W x D)

score pro 959



score basic 950



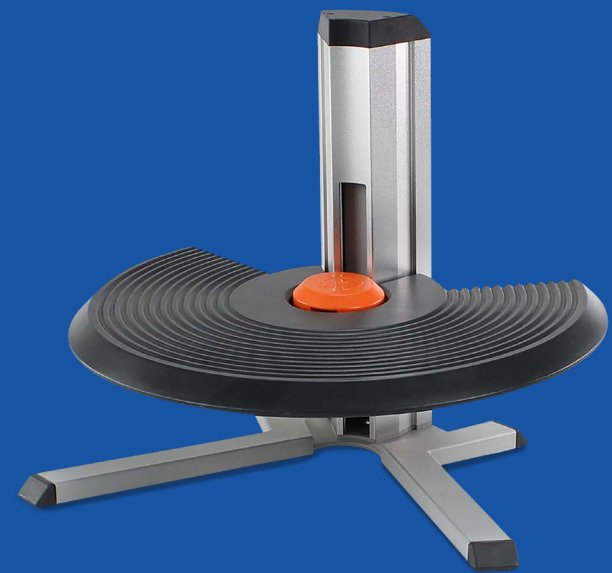
- Practical footrest
- Operate by hand
- Adjustable tilt angle

score basic 952



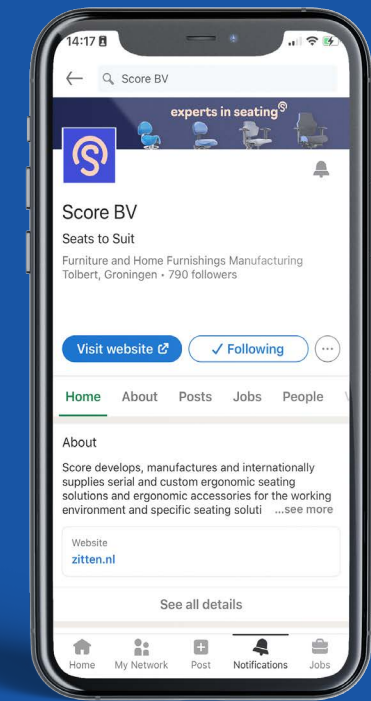
- Tiltable footboard
- Foot operated
- Adjustable tilt angle

score discus 250 T



- Designer footrest
- User-friendly
- With gaslift, adjustable from 15 - 25 cm

Follow us on
LinkedIn,
Facebook and
YouTube.



People generally spend more time sitting than standing. At home, but mainly at work. And that's not good for our bodies. At Score, we focus on seating solutions, because we believe that sitting should also be healthy.

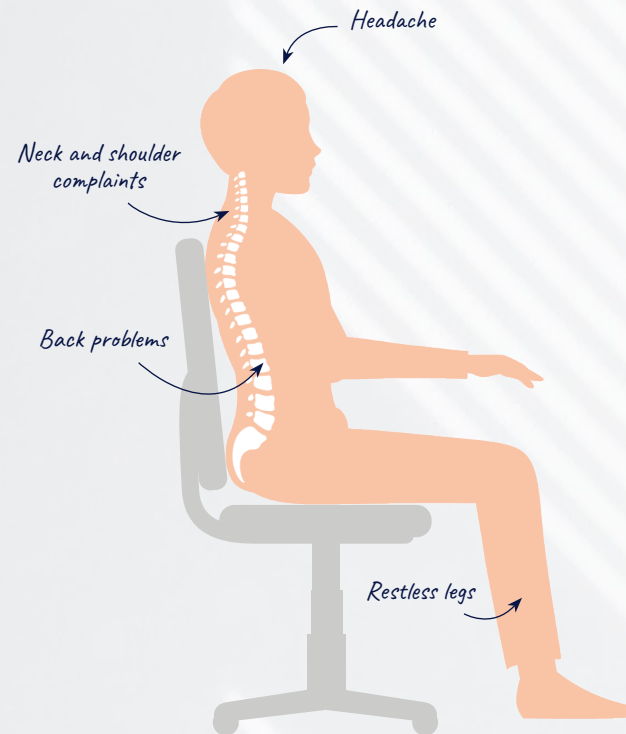
Sitting comfortably makes work more pleasant and you can concentrate better. After a workday you have more energy left to do fun things and you prevent physical problems. Because employees who sit a lot – have to stand for a long time or make repetitive movements for their work – often force their body into a certain position for a long period of time. When that posture is wrong, it quickly leads to physical irritation and fatigue, which in the longer term can lead to physical complaints, with long-term sick leave as a possible result.

Investing in 'good sitting posture' is a golden investment for companies and quickly pays for itself. It's one of the few affordable ways to increase employee productivity and prevent sick leave.

Happy employees, happy employers!

Our solutions to the law of cause and effect

Standing or sitting slightly incorrectly can have big long-term consequences. In the diagram on the right you will find an overview with complaints, causes and a possible solution. Do you have another problem or a question about it? Feel free to contact us. Our well-trained workplace advisers are experts on sitting and will be happy to advise you on the best seating solution for you and your specific workplace.



Complaint

Restless legs, irritation and loss of concentration

Irritation and loss of concentration

Neck and back problems

Fatigue and loss of concentration

Neck and shoulder complaints

Restlessness, lack of concentration and neck and shoulder complaints

Back complaints and fatigue

Cause

Seat is too high, feet don't touch the floor so no possibility to shift position and inhibits blood circulation

Seat depth is too small, so no possibility to shift position

The lack of a (non-adjustable) backrest, resulting in a bent trunk position, unilateral load on the joints and muscles in the back and more difficult breathing due to compression of the abdominal cavity

Unstable chair or seat, the body is constantly trying to find balance

Chair is not rotatable, resulting in uneven strain on the joints and intervertebral discs of the spine and on the ligaments and muscles in the back

The lack of - or inability to adjust - armrests, the body unconsciously searches for possibilities to rest the weight of the arms

Backrest does not provide sufficient support to the lumbar region, which puts too much strain on the spine because it cannot assume its natural position

Solution

Adjust a higher work chair, place a seat to the right height or a separate footrest with foot control

If possible, increase seat depth. Otherwise a work chair with sliding seat

Work chair with adjustable backrest

Work chair with a sturdy and stable base

Rotatable work chair

Install height and width adjustable armrests

Work chair with an ergonomically shaped backrest that fits into the lumbar region

A good work chair helps you do your job. It helps you stay focused, even after hours of desk work or precision work in the same position. It supports you in all the right places, prevents physical irritation, muscle aches and fatigue and is easy to adjust to suit you in terms of height, seat depth and tilt.

The seat material should allow you to sit up easily, but you should not slide off. In addition, you should be able to clean it easily. Maybe in your industry it should even be fire-retardant or moisture-repellent. The chair should be stable. Your feet should have good access to the floor, or you should have a footrest at your disposal. And if you have a slightly longer stature, the seat depth should be extendable so that your thighs get the support you need. The seat and backrest should firm and comfortable at the same time, and your posture while sitting should be as natural possible, so you automatically sit as relaxed as possible. This, and much more, can be found in Score's seating solutions.

Functional design and anatomically shaped with optimal pressure distribution. The seat ensures a healthy working posture, without slipping off

Available in various mechanisms, including our unique Balance mechanism that moves subtly along with you



The upholstery is easy to clean, sufficiently ventilated, not too rough and not too smooth

Easily and quickly set the correct working height

A strong stable base with at least 5 toes equipped with smoothly running castors

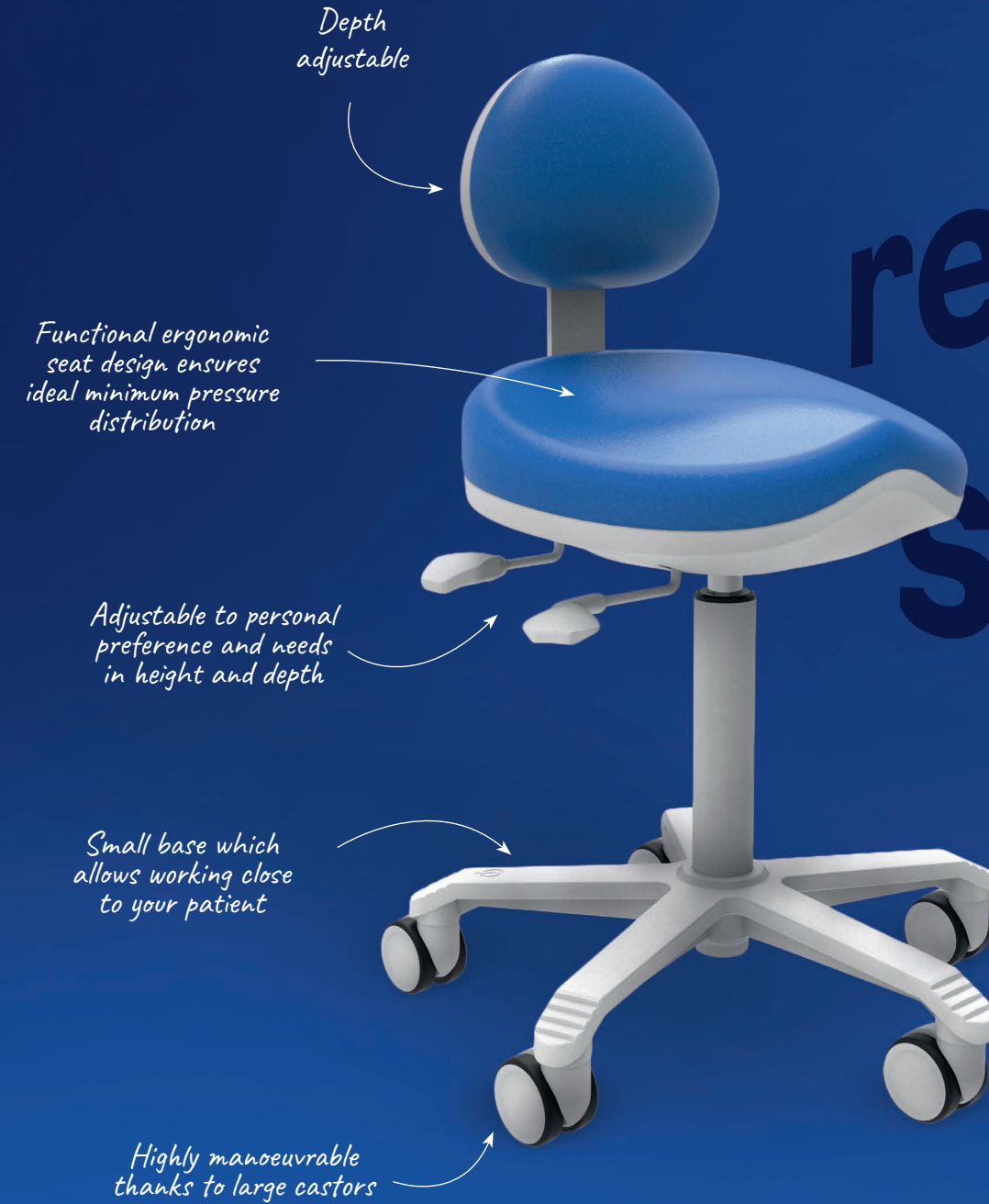


As an oral care professional, you often pinch yourself in all kinds of twists and turns to be able to do your job well. This often leads to static muscle tension and extra pressure on the vulnerable parts of the back and neck vertebrae.

Research shows that no less than 70% of oral care professionals regularly experience physical complaints. High time to pay attention to how you can do your work healthily and comfortably and how to adjust your chair properly.


Important for an optimal sitting position is that you sit relaxed. For this, your joints must be in a neutral position – so not at an uncomfortable angle. Sitting in the same position for a long time should require as little effort as possible from your muscles. And you have to have room to vary your posture while sitting. The latter means that the seat is large enough and that you have enough space to move your feet. And then, of course, there are the settings of your chair. We go through them in the steps on the right.

We've got your back.



ready.
sit.
go!

 Feithspark 5
9356 BX Tolbert
The Netherlands

 +31 (0) 594 55 40 00

 info@scoreseating.com

 scoreseating.com